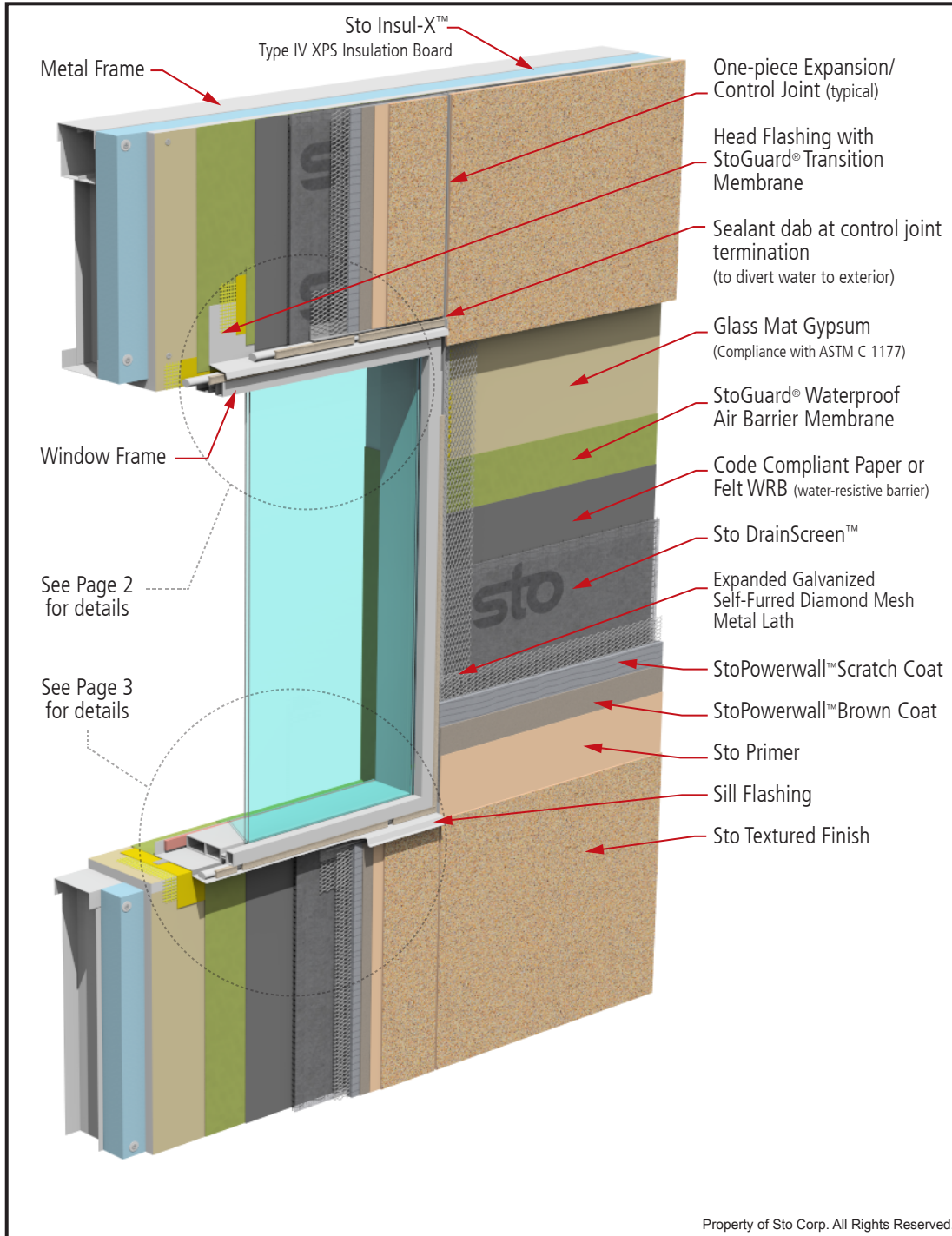


# Sto® Powerwall® ci Box Window at Sill, Jamb, and Head

Detail No.: 62s.05  
Date: January 2015  
Page 1 of 3



- Notes:**
- StoGuard® joint treatment options:
    - StoGuard® RapidSeal® with StoGuard® Mesh ( joints ≤ 1/4 inch [6 mm] )
    - Sto Gold Fill® with StoGuard® Mesh ( joints ≤ 1/8 inch [3 mm])
    - StoGuard® Fabric with StoGuard® waterproof air barrier membrane ( joints ≤ 1/8 inch [3 mm])
  - StoGuard® waterproof air barrier membrane options:
    - Sto Gold Coat® (vapor permeable)
    - Sto EmeraldCoat® (high perm)
    - Sto VaporSeal™ (vapor impermeable)
    - Sto AirSeal™ (high perm) (Not for use with Sto Guard Fabric)
  - Water-Resistive Barrier: Minimum #15 grade D building paper.
  - Refer to product bulletins and Sto Specification S 507 for complete information on Sto products. Refer to StoGuard® Waterproof Air Barrier detail series 20.XX for information on detailing with StoGuard®.
  - IMPORTANT.** Refer to Sto Detail 62s.FP for special requirements related to Noncombustible Type construction and Fire-Resistive Rated Construction
  - Consult with window and sealant manufacturers to verify window installation and detailing to assure no leakage into the wall assembly. Consult with window manufacturer regarding window and flashing assemblies with thermal breaks to avoid condensation. Test the final assembly using materials and sub-trades associated with the project to verify performance.
- IMPORTANT:** Components not identified as Sto are furnished by other manufacturers and are not necessarily installed by trades who install the Sto products. Refer to project specific contract documents.

**ATTENTION**

Sto products are intended for use by qualified professional contractors, not consumers, as a component of a larger construction assembly as specified by a qualified design professional, general contractor or builder. They should be installed in accordance with those specifications and Sto's instructions. Sto Corp. disclaims all, and assumes no, liability for on-site inspections, for its products applied improperly, or by unqualified persons or entities, or as part of an improperly designed or constructed building, for the nonperformance of adjacent building components or assemblies, or for other construction activities beyond Sto's control. Improper use of Sto products or use as part of an improperly designed or constructed larger assembly or building may result in serious damage to Sto products, and to the structure of the building or its components.

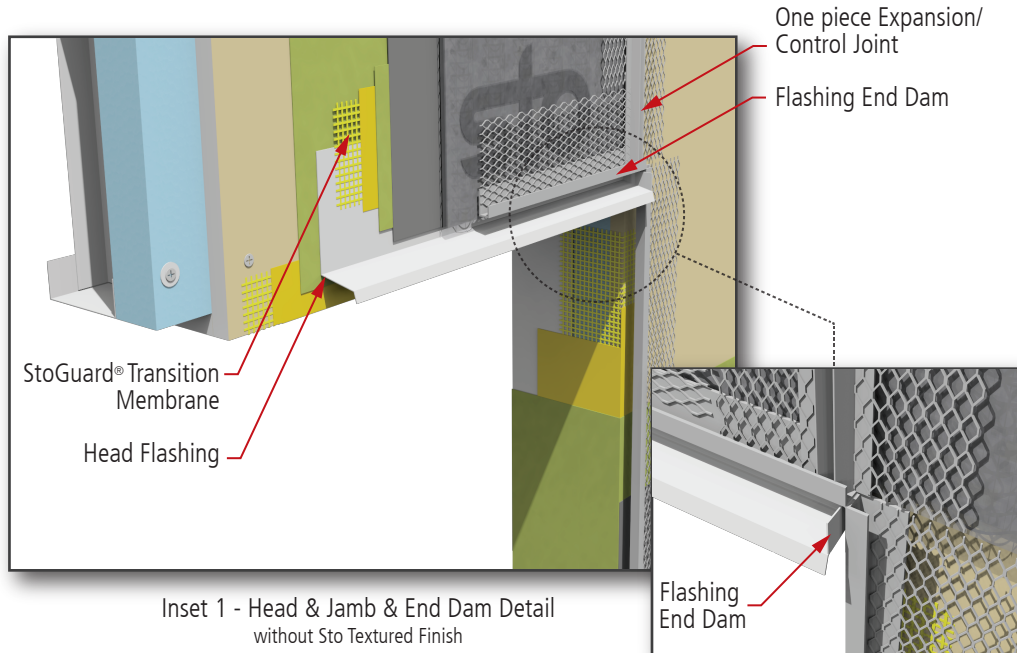
STO CORP. DISCLAIMS ALL WARRANTIES EXPRESSED OR IMPLIED EXCEPT FOR EXPLICIT LIMITED WRITTEN WARRANTIES ISSUED TO AND ACCEPTED BY BUILDING OWNERS IN ACCORDANCE WITH STO'S WARRANTY PROGRAMS WHICH ARE SUBJECT TO CHANGE FROM TIME TO TIME. For the fullest, most current information on proper application, clean-up, mixing and other specifications and warranties, cautions and disclaimers, please refer to the Sto Corp. website, [www.stocorp.com](http://www.stocorp.com).

# Sto®Powerwall® ci Box Window at Head/Jamb

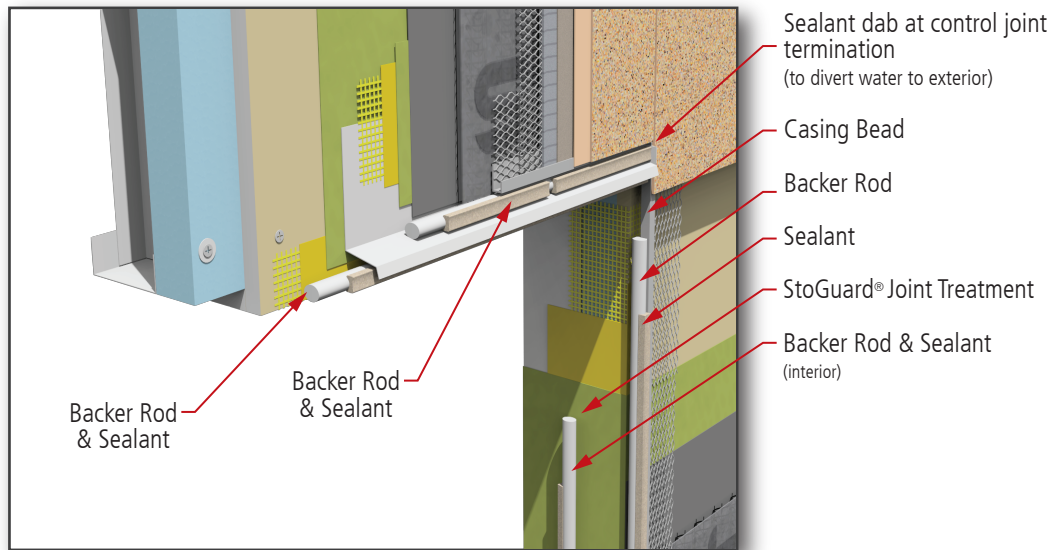
Detail No.: 62s.05

Date: January 2015

Page 2 of 3



Inset 1 - Head & Jamb & End Dam Detail  
without Sto Textured Finish



Inset 2 - Head & Jamb Detail  
with Sto Textured Finish

### Notes:

- StoGuard® joint treatment options:
  - StoGuard® RapidSeal® with StoGuard® Mesh (joints ≤ 1/4 inch [6 mm])
  - Sto Gold Fill® with StoGuard® Mesh (joints ≤ 1/8 inch [3 mm])
  - StoGuard® Fabric with StoGuard® waterproof air barrier membrane (joints ≤ 1/8 inch [3 mm])
- StoGuard® waterproof air barrier membrane options:
  - Sto Gold Coat® (vapor permeable)
  - Sto EmeraldCoat® (high perm)
  - Sto VaporSeal™ (vapor impermeable)
  - Sto AirSeal™ (high perm)  
(Not for use with Sto Guard Fabric)
- Water-Resistive Barrier: Minimum #15 grade D building paper.
- Refer to product bulletins and Sto Specification S 507 for complete information on Sto products. Refer to StoGuard® Waterproof Air Barrier detail series 20.XX for information on detailing with StoGuard®.
- IMPORTANT.** Refer to Sto Detail 62s.FP for special requirements related to Noncombustible Type construction and Fire-Resistive Rated Construction
- Consult with window and sealant manufacturers to verify window installation and detailing to assure no leakage into the wall assembly. Consult with window manufacturer regarding window and flashing assemblies with thermal breaks to avoid condensation. Test the final assembly using materials and sub-trades associated with the project to verify performance.

**IMPORTANT:** Components not identified as Sto are furnished by other manufacturers and are not necessarily installed by trades who install the Sto products. Refer to project specific contract documents.

Property of Sto Corp. All Rights Reserved.

[www.stocorp.com](http://www.stocorp.com)

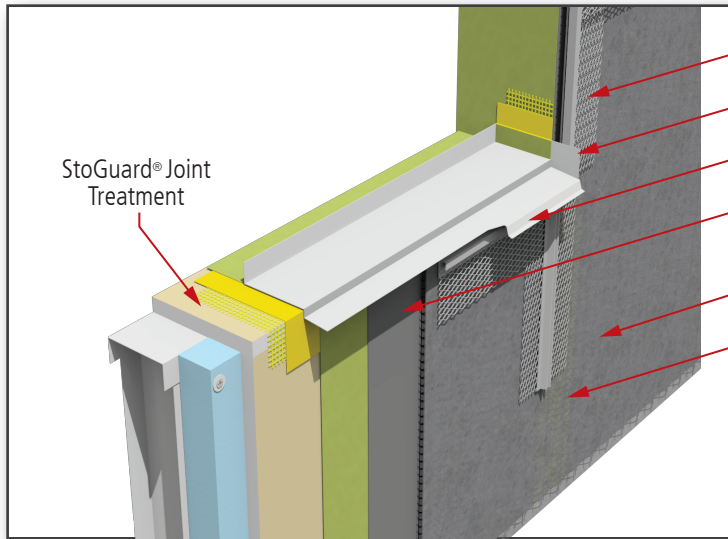
### ATTENTION

Sto products are intended for use by qualified professional contractors, not consumers, as a component of a larger construction assembly as specified by a qualified design professional, general contractor or builder. They should be installed in accordance with those specifications and Sto's instructions. Sto Corp. disclaims all, and assumes no, liability for on-site inspections, for its products applied improperly, or by unqualified persons or entities, or as part of an improperly designed or constructed building, for the nonperformance of adjacent building components or assemblies, or for other construction activities beyond Sto's control. Improper use of Sto products or use as part of an improperly designed or constructed larger assembly or building may result in serious damage to Sto products, and to the structure of the building or its components.

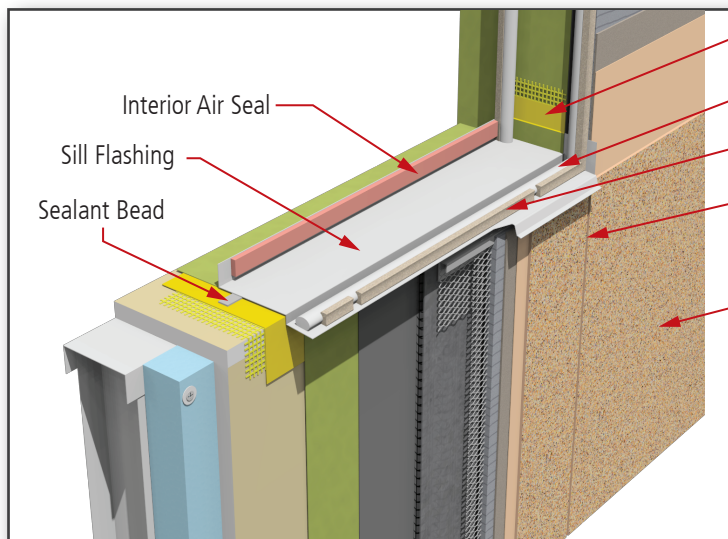
STO CORP. DISCLAIMS ALL WARRANTIES EXPRESSED OR IMPLIED EXCEPT FOR EXPLICIT LIMITED WRITTEN WARRANTIES ISSUED TO AND ACCEPTED BY BUILDING OWNERS IN ACCORDANCE WITH STO'S WARRANTY PROGRAMS WHICH ARE SUBJECT TO CHANGE FROM TIME TO TIME. For the fullest, most current information on proper application, clean-up, mixing and other specifications and warranties, cautions and disclaimers, please refer to the Sto Corp. website, [www.stocorp.com](http://www.stocorp.com).

# Sto®Powerwall® ci Box Window at Sill/Jamb

Detail No.: 62s.05  
Date: January 2015  
Page 3 of 3



Inset 3 - Sill & Jamb Detail  
without Sto Textured Finish



Inset 4 - Sill & Jamb Detail  
with Sto Textured Finish

### Notes:

- StoGuard® joint treatment options:
  - StoGuard® RapidSeal® with StoGuard® Mesh (joints  $\leq$  1/4 inch [6 mm])
  - Sto Gold Fill® with StoGuard® Mesh (joints  $\leq$  1/8 inch [3 mm])
  - StoGuard® Fabric with StoGuard® waterproof air barrier membrane (joints  $\leq$  1/8 inch [3 mm])
- StoGuard® waterproof air barrier membrane options:
  - Sto Gold Coat® (vapor permeable)
  - Sto EmeraldCoat® (high perm)
  - Sto VaporSeal™ (vapor impermeable)
  - Sto AirSeal™ (high perm)  
(Not for use with Sto Guard Fabric)
- Water-Resistive Barrier: Minimum #15 grade D building paper.
- Refer to product bulletins and Sto Specification S 507 for complete information on Sto products. Refer to StoGuard® Waterproof Air Barrier detail series 20.XX for information on detailing with StoGuard®.
- IMPORTANT. Refer to Sto Detail 62s.FP for special requirements related to Noncombustible Type Construction and Fire-Resistive Rated Construction
- Consult with window and sealant manufacturers to verify window installation and detailing to assure no leakage into the wall assembly. Consult with window manufacturer regarding window and flashing assemblies with thermal breaks to avoid condensation. Test the final assembly using materials and sub-trades associated with the project to verify performance.

**IMPORTANT:** Components not identified as Sto are furnished by other manufacturers and are not necessarily installed by trades who install the Sto products. Refer to project specific contract documents.

Property of Sto Corp. All Rights Reserved.

[www.stocorp.com](http://www.stocorp.com)

### ATTENTION

Sto products are intended for use by qualified professional contractors, not consumers, as a component of a larger construction assembly as specified by a qualified design professional, general contractor or builder. They should be installed in accordance with those specifications and Sto's instructions. Sto Corp. disclaims all, and assumes no, liability for on-site inspections, for its products applied improperly, or by unqualified persons or entities, or as part of an improperly designed or constructed building, for the nonperformance of adjacent building components or assemblies, or for other construction activities beyond Sto's control. Improper use of Sto products or use as part of an improperly designed or constructed larger assembly or building may result in serious damage to Sto products, and to the structure of the building or its components.

STO CORP. DISCLAIMS ALL WARRANTIES EXPRESSED OR IMPLIED EXCEPT FOR EXPLICIT LIMITED WRITTEN WARRANTIES ISSUED TO AND ACCEPTED BY BUILDING OWNERS IN ACCORDANCE WITH STO'S WARRANTY PROGRAMS WHICH ARE SUBJECT TO CHANGE FROM TIME TO TIME. For the fullest, most current information on proper application, clean-up, mixing and other specifications and warranties, cautions and disclaimers, please refer to the Sto Corp. website, [www.stocorp.com](http://www.stocorp.com).